

# Assembly Guide: Grow Box Suitcase



A Complete "Step-by-Step" Guide for Assembling and Mounting the Bonsanto Grow Box and Its Components.



## Contents

Suitcase  
Suitcase Dimensions  
Weight  
Volume  
Fan  
Container Volume  
Operating Temperature  
Bonsanto LED (Lamp)

## Technical Description (XL; L; M)

Polycarbonate - Flame Resistant  
74 x 47 x 23 cm; 65 x 41 x 24 cm; 57 x 25 x 37 cm (H x W x D)  
Approximately 4000 grams  
95 L; 60 L; 34 L  
5V - USB Connection  
Approximately 3.2L or 1L depending on selection  
Around 20-25°C  
35W / 70 W - CE marking - Waterproof - 85% light output after 100,000 hours

## Before You Begin:

To ensure the suitcase remains stable throughout all assembly steps, it should be secured with the included base support!

*To do this, insert the support rail underneath the suitcase shell as shown in the image on the right.*

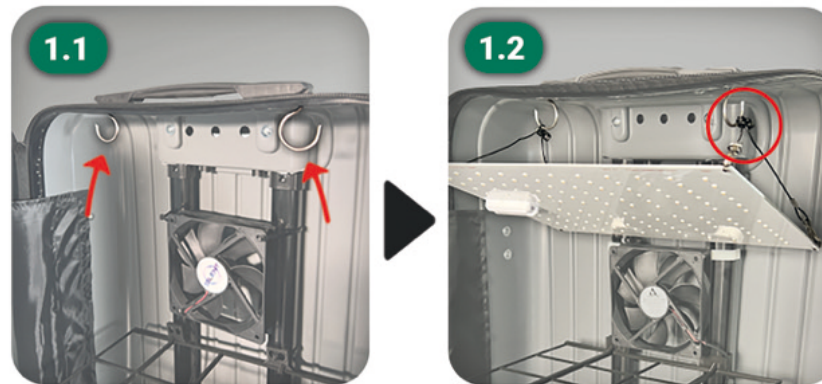


## Assembly Guide Steps 1.0 - 6.0

### STEP 1.0: LAMP INSTALLATION

The metal hooks, as shown in Image 1.1, are already pre-installed in the suitcase.

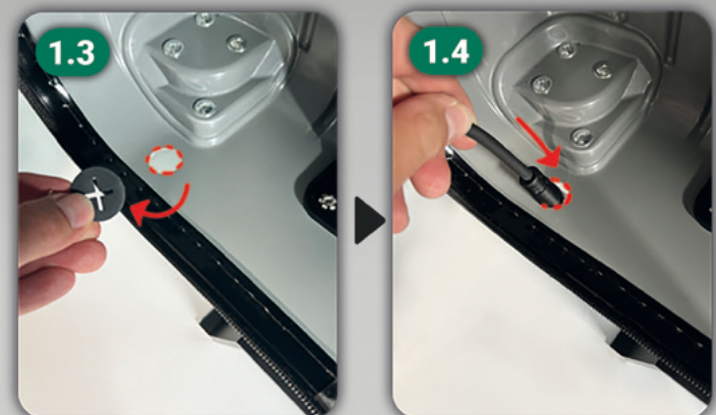
Step 1.2 hang the lamp onto the suspension using the cord, as demonstrated. We recommend securing the cord with zip ties for added stability.



### Cable Management:

Remove the cable gland from the hole, as shown in Image 1.3.

Feed the cable through the hole, as illustrated in Image 1.4.



## Additional Operating Information

### CO2 BAG



### CO2 Bag Installation and Instructions

The CO2 bag can be attached to the hook in the left suitcase shell, as shown in the image on the left.

Ensure the hook is inserted below the designated hole so that the bag rests on the suitcase floor instead of hanging.

### CLOSING THE SUITCASE

When closing the suitcase, always lift the right shell, as shown on the right, to ensure that the pots and drip trays do not catch on the left shell.

This is especially important when plants are inside the suitcase.



You Already Own Our New NEO V 3.0 Suitcase. Thanks to its innovative design, you no longer need to close the zipper at the bottom. Simply close the zipper at the top and sides. This allows fresh air to flow through the slightly open bottom section of the zipper and be drawn upward. It eliminates the hassle of closing the zipper at the bottom while ensuring optimal airflow inside the suitcase.

### LOCK



#### Password and Usage

The suitcase is always delivered unlocked with the combination lock shown on the left.

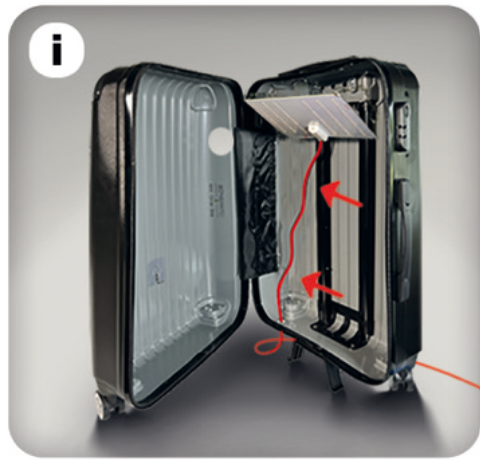
Be sure to securely note down your password to avoid any risk to your plants.

### MAXIMUM SUCCESS



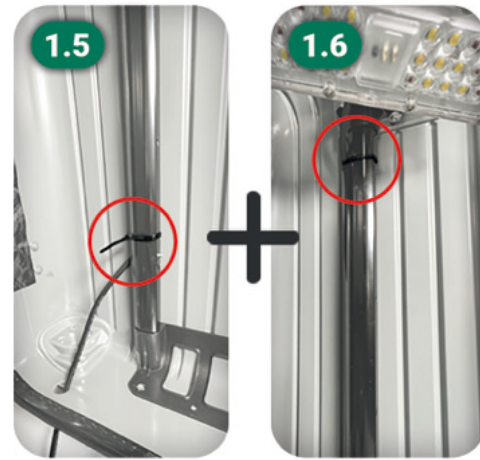
For optimal results in mini growing, use Organic Boost and Extreme Energy. These premium fertilizers are perfectly tailored and ideal for natural cultivation (suitable for edible plants). Complete your setup with Organic Mix Soil, ensuring smooth germination, growth, and blooming.





### Securing the Cable

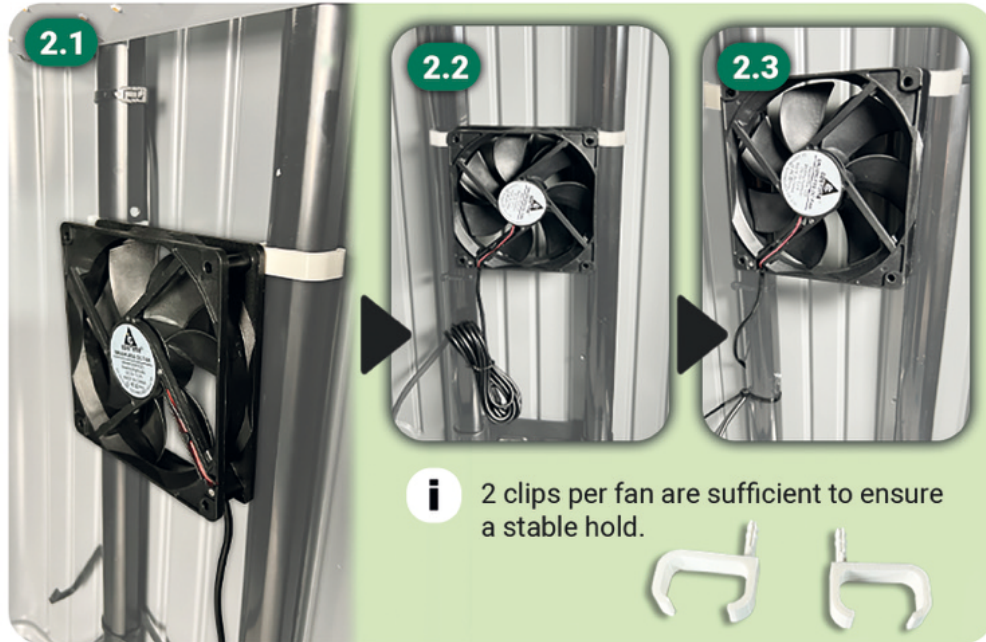
To ensure the cable does not obstruct the setup, we recommend fastening it to the black rails inside the suitcase using a zip tie, as shown in Images 1.5 and 1.6.



### STEP 2.0: VENTILATION

The fan is not pre-assembled in the suitcase. Attach it using two clips to hold it onto the two rods securely.

We recommend fastening the cable with zip ties, as shown in Images 2.2 and 2.3.



**i** 2 clips per fan are sufficient to ensure a stable hold.

### STEP 3.0: ACTIVATED CARBON FILTER

For the following steps, place the suitcase on its side as shown in the image on the right.

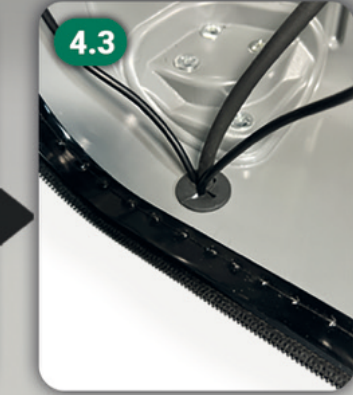
Then, follow the process illustrated in Images 3.1 to 3.3. Insert the filter from the inside. Screw the removed nut back on from the outside. Ensure that when the suitcase is upright, the filter's white logo faces upwards.



### STEP 4.0: CABLE MANAGEMENT

Pull the filter cable and fan cable through the opening, as shown in Images 4.1 and 4.2.

Then, insert the previously cut cable guide into the opening, as illustrated in Image 4.3.



### STEP 5.0: POTS

First, as shown in Image 5.1, insert the two hooks behind the rails inside the suitcase.

Then, attach the pots one by one, as demonstrated in Images 5.2 and 5.3.

Finally, slide the drip trays under the pots, as shown in Image 5.4.



### **i** Caution When Closing

Refer to page 4 of the manual for important details to ensure proper and safe closing of the suitcase.

### STEP 6.0: SCROG NET

Align Net properly to ensure stability and functionality.

Place the plant under the lamp and fan.

Secure it to the SCROG net

